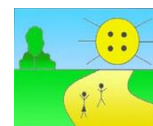


BUTTON LANE NEWS



Friday 14th September 2018

Another good week, we have seen positive attitudes across school which has been very pleasing. We have welcomed lots of new families, particularly up in Key Stage 2 and the children have demonstrated how good they are at being super friends. Well done to everyone and enjoy the weekend!



Class	Good Work	Class	Good Work
Palm Tree	All of Palm Tree -.For settling in well to reception.	3KB	Sarah Anu – A fantastic start to our English work and beautiful presentation.
Willow Tree	All of Willow Tree – For settling in well to reception.	3SP	Warren Muir – Always having his hand up and answering questions.
1CH	Scarlett Fannon – Settling in to Year 1 and being a good role model.	4DB	Demi McAleese – A fantastic start to the year.
1MG	Sayda Najafi Hajivar – Settling in well to her new school.	4EM	Lilly-Belle Millington-Young – A super member of the class.
1MH	All of 1MH for settling in to Year 1 and showing green behaviour.	5AC	All of 5AC for settling in really well.
2AW	Jack Howard – Making a super effort with his handwriting.	5CE	Declan Chappell – Having a good attitude to his work.
2NT	Layla Tideswell – Settling into Year 2 really well.	6SG	Leelan Golden – Making a fantastic start to Year 6 and settling in well.
3AG	Scarlett McMullen-Hindley – Settling in to Year 3 beautifully and showing a wonderful mature attitude.	6TP	Nasra Idiris – Excellent answering of questions in class.

Friends of Button Lane

Friends of Button Lane have worked really hard over the past few years to increase their numbers. It is a small group of Parents who have helped fund raise for the school and our chosen charity. They attend coffee mornings where they put forward ideas for future events and look at ways we could continue to raise money. We are always looking for more helpers and would welcome new members. Please find below the meeting dates and come and join us for a brew and biscuit:

12th September - 8.45am – 10.30am

3rd October - 8.45am - 10.30am

10th October - 8.45am - 10.30am

31st October - 8.45am – 10.30am

21st November - 8.45am - 10.30am

28th November - 8.45am - 10.30am

5th December - 8.45am - 10.30am



ParentPay

Don't forget to sign up for ParentPay. Our aim is to become a cashless school. If you still wish to pay with cash please go to the office and they will provide you with a Pay Point card.



Punctuality

We have seen a massive improvement of punctuality these first 2 weeks back, well done! Please keep it up. If your child is late for school they miss vital minutes of learning and social time in school.



Where only the best is good enough

Sports News

Well that's sport well and truly started at Button Lane again! We have had all children taking part in 2 hours of P.E each week.

We took part in a cross country competition this week with some amazing results and also had the Manchester United Foundation in school working with the children as well!

If your child wears earrings please can you bring plasters so they can be covered up, this is due to health and safety.



Attendance

Our theme for attendance this year is: Over the Rainbow

This week the school has a weekly percentage of 97.8%, an amazing achievement, keep it up!

The top class this week was 2AW with a fantastic 100%

The year to date attendance is 97.7%



Attendance Facts

Attendance during one school year	How many days absent?	How many weeks absent?	How many lessons missed?
95%	9 days	2 weeks	50 lessons
90%	19 days	4 weeks	100 lessons
80%	38 days	8 weeks	200 lessons
70%	57 days	11.5 weeks	288 lessons
60%	80 days	16 weeks	400 lessons
50%	100 days	20 weeks	500 lessons

After several months our website has now been redesigned! Please bear with us as we make some changes to pages and update information. We hope you like it and please let us know what you think!

www.buttonlane.manchester.sch.uk

Don't forget to look at our Twitter page for updates of things happening in school and what the children have been up to.



Need Support?...some useful numbers

Women's Domestic Violence - 0161 636 7525

Men's Domestic Violence Helpline - 0808 80100327

NSPCC 24 hour free phone service - 0800 800 500

Childline - 0800 1111

Police (if not urgent) 101 Women's aid 0161 660 7999

Safeguarding Children

Every week we put on our newsletter the number for Social Services: 0161 234 5001. If you are ever concerned about any child please report it to Mrs Jones.

School Mobile

If your child is absent you can send a message to the school mobile the number is: 07599954928
Please note you cannot ring this number & we will not use this number to ring you.

Where only the best is good enough