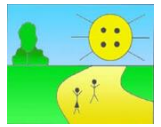




# BUTTON LANE NEWS

Friday 20<sup>th</sup> January 2023



Due to the snow this week, our school grounds have unfortunately become very slippery in areas. We have gritted but please take care when navigating around the school grounds.  
Thank you for your support.

## OPAL (Outdoor Play And Learning)

We would really appreciate you taking the time with your child to complete the attached survey. The questions are for your child to answer as part of our work with OPAL (Outdoor Play And Learning). We need their views on playtimes to help us with developing our outdoor spaces and how we use them.

Children's play survey link:

<https://www.surveymonkey.co.uk/r/N3WWZ3K>

Thank you for your support.



## Gifted and Talented

On Wednesday, Button Lane hosted a cluster art group for Year 6. The children learnt all about the artist Kandinsky and explored his abstract artwork. They learnt all about how his artwork reflects sounds and colours, and produced their own Kandinsky- style piece to take home. Fun was had by all and it was wonderful to collaborate with children from different schools. The artwork produced was amazing!



## Nursery – September 2023

We are now accepting admission forms for children who are due to start nursery in September 2023. If your child will be three before the 1<sup>st</sup> September 2023 and you would like them to attend our nursery, please complete an admission form and return it to the school office. Admission forms are available via our website or a paper copy can be collected from our school office. Please tell your friends and family.



## Best of Luck

Today is Mrs Thompson's last day at Button Lane, she is leaving to begin adoption leave. This is a journey that Mrs Thompson and her husband have been on for some time and we are thrilled that they will finally be welcoming a lovely young child into their family. Whilst we are sorry to see Mrs Thompson leave for the remainder of this academic year, we wish her well and look forward to hearing the updates and how they are all settling in.

*All the best!*

## Break the School Rules Day

Unfortunately, the children have not improved the whole school attendance this week. The children have been set the challenge again. Next week they are aiming to improve on this week's whole school attendance of 93.4%. Please support your child by ensuring they have 100% punctual attendance next week.



Where only the best in good enough

### Dates for your diaries



25<sup>th</sup> January – Burns Night

31<sup>st</sup> January – Year 6 SATS

parent's information session



2<sup>nd</sup> February – Reception and Year 1 phonics parents meeting

4<sup>th</sup> February - Children's Mental Health Week

4<sup>th</sup> February - Rosa Parks' birthday

7<sup>th</sup> February - Safer Internet Day

9<sup>th</sup> February – 5G Class assembly

10<sup>th</sup> February – Feel Good Friday

13<sup>th</sup> February - Ghyll Head

17<sup>th</sup> February – School closes for half term

27<sup>th</sup> February – Back to school

### ReachOut! Character Legends

ReachOut!  
This week our character legends were:

Year 5: David

Year 6: Taylor and Harry



### Bike Racks

The bike racks have been relocated to the end of the KS2 building off the main drive, next to the gate into Forest school. If your child comes to school on a bike please remind them where to store their bikes.

Please note, all bikes are left at your own risk and we cannot take responsibility in the security.

### Need Support?...some useful numbers

Women's Domestic Violence -

0161 636 7525

Men's Domestic Violence Helpline -

0808 80100327

NSPCC 24 hour free phone service - 0800 800 500

Childline - 00 1111

Police (if not urgent) 101

Women's aid 0161 660 7999

For help with online safety NSPCC Advice Line for questions about parental controls, privacy settings, apps and social media.

Call 0808 800 5002, Monday to Friday, 9am to 4pm.

### P.E. Kits

There have been a number of children who have not returned to school with their P.E kit and have therefore been unable to take part in their P.E lesson. Please ensure your child has their kit in school. Now the colder weather has arrived your child will require the appropriate clothing for outdoor P.E.



### Reminder

Mobile phones are NOT allowed in school. This rule is in place to ensure the safeguarding of all our pupils. If there are exceptional circumstances where your child needs to bring their mobile phone into school, please contact the school office for permission. All phones are to be left at the school office. If you have not received permission from school, please ensure your child does not bring their mobile phone into school.

Thank you for your support.



### Safeguarding Children

Every week we put on our newsletter the number for Social Services: 0161 234 5001. If you are ever concerned about any child, please report it to Mrs Jones.

### Reception Playground

Please be aware that parts of the Reception outdoor play area are being remodelled, including moving some of the tyres. Please take extra care when passing through this area with your child (arriving and departing).



### Attendance

This week's attendance is 93.4%.

The top class this week was 6M with 96.3%.

The year to date attendance is 93.2%

Class 1D enjoyed a popcorn and movie afternoon today for being last half term's attendance winners.



**Where only the best in good enough**

## Over and Above

Examples of children going "Over and Above".

**5P - Sameed**  
For making a better contribution in all his lessons.

**2A - Mariam**  
For always being ready to learn and working hard in English and Maths.

**Willow Tree - Bethany**  
For trying her best in phonics lessons this week.

**5G - Scarlett**  
For fabulous contributions during our dance PE session this week.

**6F - Alisiya**  
For writing a fantastic set of diary entries in English this week.

**6M - Alana**  
For continually demonstrating all of the school values. This week, she has gone over and above to help the teachers and children in her class. In PE, she demonstrated honesty and leadership skills.

**Sunshine - Elijah**  
Super Spider-Man counting.

**Moonbeam - Bobby**  
For creating a great model of the 'Naughty bus', using different art materials and tools.

**1D - Charlie**  
For trying exceptionally hard to work on his writing and Maths. Mrs Davies and Miss Goulden have definitely seen an improvement.

**3S - Aurthur**  
For a great start to being at Button Lane.

**4E - Mali**  
For excellent subject knowledge in music and achieving highly on her science assessment.

**3B - Lavinia**  
For working really hard and making great progress in her reading.

**2T - Harry M Q**  
For trying hard to join in with Talk for Writing actions for our book The Man on the Moon.

**5C - Alessio**  
For empathy for another child in class and his family project homework.

**1H - The whole class**  
For working hard doing their first talk for writing in English.

**Palm Tree - Thiago**  
For settling so well into our school and for always trying his best.